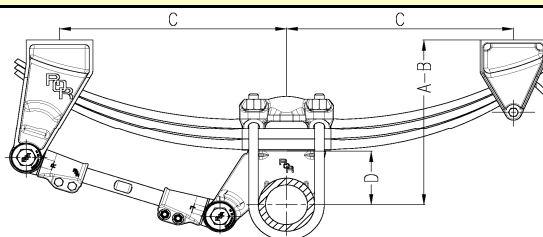


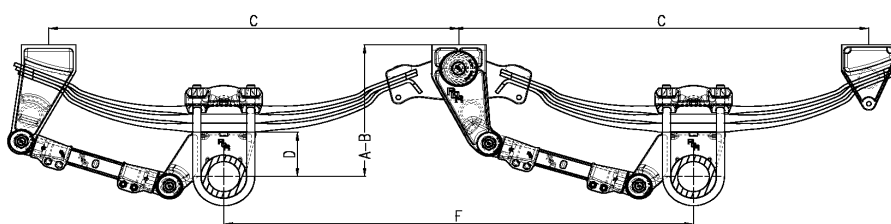
SMT Suspensions

SINGLE



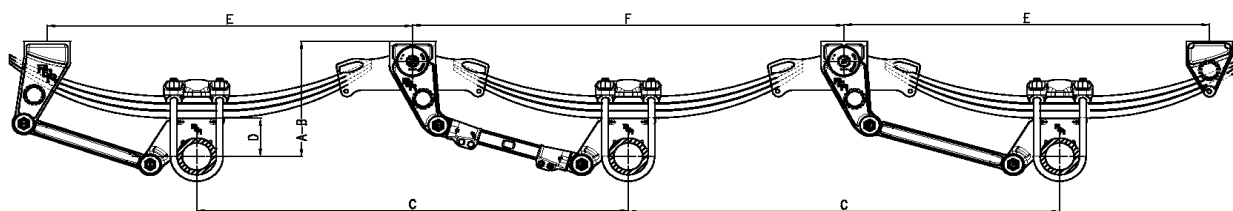
Type	Cap. t	A (unladen)	B (laden)	C	D (*)	No. of leaves	Spring part No.
SMT 16/3L-1A-7/15	8	381	354	413	68	3	21215420
SMT 22/3L-1A-7/16	10	400	353	518	68	3	21221244
SMT27/4L-1A-7/16	12	412	362	518	68	4	21220913
SMT27HDL-1A-7/18	12	450	402	518	68	12	21025427

TANDEM



Type	Cap. t	A (unladen)	B (laden)	C	F	D (*)	No. of leaves	Spring part No.
SMT 32/3L-2A-7/16	16	381	354	980	1145	68	3	21215420
SMT44/3L-2A-7/16	20	400	353	1194	1360	68	3	21221244
SMT 56/4L-2A-7/16	24	412	362	1194	1360	68	4	21220913
SMT60HDL-2A-7/18	24	450	402	1194	1360	68	12	21025427

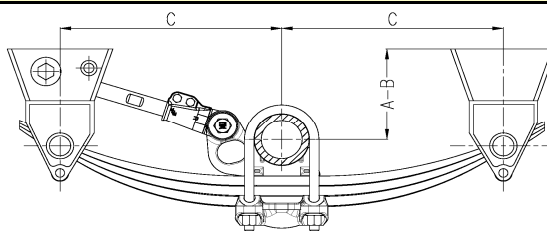
TRI-AXLE



Type	Cap. t	A (unladen)	B (laden)	C	E	F	D (*)	No. of leaves	Spring part No.
SMT67,5/3L-3A-7/16	30	400	353	1360	1194	1360	68	3	21221244 & 21221245
SMT 80/4L-3A-7/16	36	412	362	1360	1194	1360	68	4	21220913 & 21221509
SMT80HDL-2A-7/18	24	450	402	1360	1194	1360	68	12	21025427 & 21202467

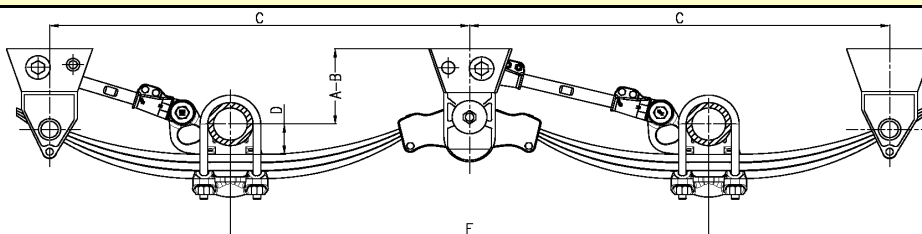
SMT Suspensions

SINGLE UNDERSLUNG



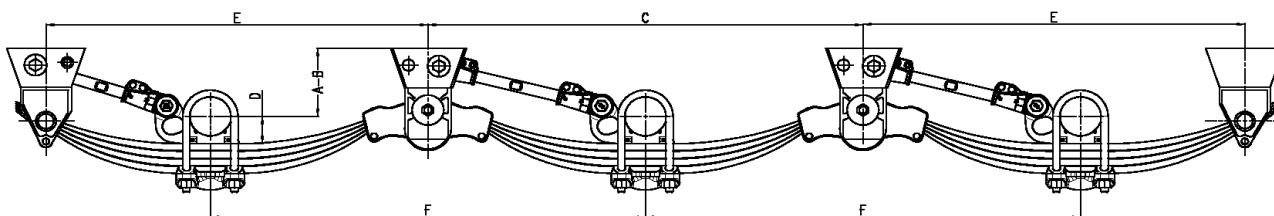
Type	Cap. t	A (unladen)	B (laden)	C	No. of leaves	Spring part No.
SMT22/3L-1A-10US	10	224	176	518	3	21221244

TANDEM UNDERSLUNG



Type	Cap. t	A (unladen)	B (laden)	C	F	D	No. of leaves	Spring part No.
SMT44/3L-2A-10US	20	224	176	1194	1360	26	3	21221244

TRI-AXLE UNDERSLUNG



Type	Cap. t	A (unladen)	B (laden)	C	E	F	D	No. of leaves	Spring part No.
SMT67,5/3L-3A-10US	30	224	187	1360	1194	1360	26	3	21221244 & 21221245